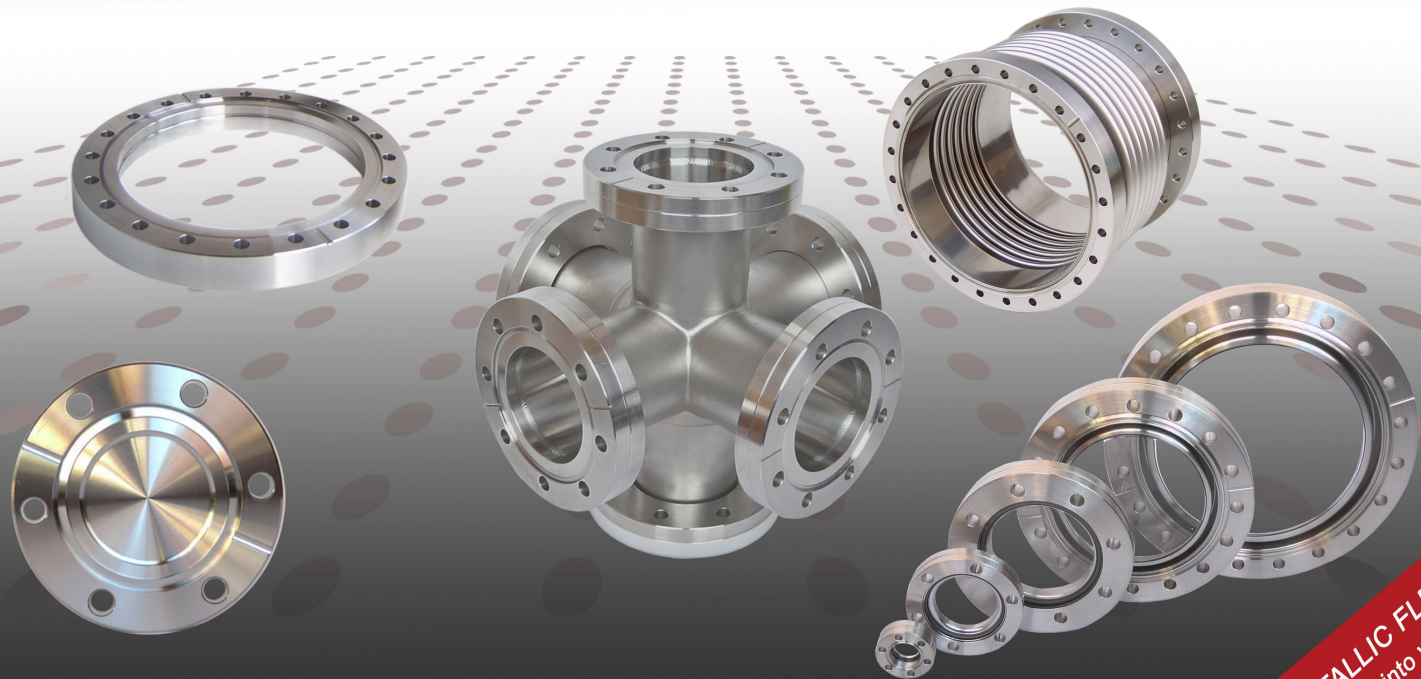


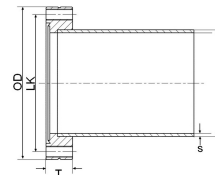
METALLIC
FLEX

CF-Flange Components



METALLIC FLEX
guide you into vacuum

CF Fittings and Components



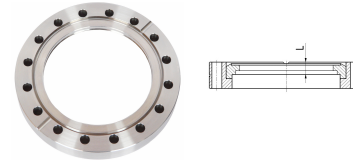
Normal Diameter	US Nomenclature OD	Flange OD	Thickness T	Tube dim. d x s	screw-hole circle LK	Screw-hole Ø d	Screws metric
DN16	1 1/3"	34	7,3	18x1	27	4,4	6xM4
DN25	2 1/8"	54	12	26,9x1,65	41,3	6,6	4xM6
DN40	2 3/4"	69,4	13	40x1,5	58,7	6,6	6xM6
DN50	3 3/8"	85,7	17,3	5 ,8x1,65	72,4	8,4	8xM8
DN63	4 1/2"	113,5	17,5	70x2	92,1	8,4	8xM8
DN100	6"	152	19,8	108x2	130,3	8,4	16xM8
DN160	8"	202,4	22,2	159x2	181	8,4	20xM8
DN200	10"	253,2	24,6	205x2,5	231,8	8,4	24xM8
DN250	12"	306	24,6	256x3	284	8,4	32xM8
DN300	14"	355,6	28,5	306x3	325,4	10,5	30xM10
DN350	16,5"	419,1	28,5	356x3	388,9	10,5	36xM10
DN400	18"	457	28,5	406x3	431,8	10,5	36xM10

CF-Components

CF-Bored Flange fixed	CF-01 - CF-03
CF-Bored Flange rotatable	CF-04 - CF-06
CF-Blank Flange fixed	CF-07 - CF-08
CF-Blank Flange rotatable	CF-09 - CF-10
CF-Flange with Tube fixed	CF-11
CF-Viewport	CF-12
CF-Flange Tubulated rotatable	CF-13
CF-Formed Bellows	CF-14
CF-Flexible Hose	CF-15 - CF16
CF-Elbow Rectangular 90°	CF-17
CF-Tee	CF-18
CF-Reducing-Tee	CF-19 - CF-20
CF-Cross	CF-21 - CF-22
CF-Straight Connector	CF-23
CF-Copper gasket	CF-24

CF-Bored Flange fixed

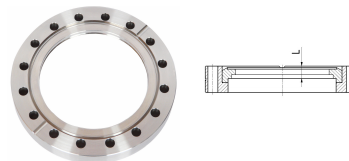
- non-tapped
- Stainless Steel



Normal Diameter	FlangeOD [mm]	Flansch OD [Zoll]	Tube	Actual length L	Holes	for Gasket
DN16	33.8x7.3	1.33"	18x1	4.8	6x4.3Ø27	21.3
DN25	54x12	2.13"	26.9x1.65	4.8	4x6.5Ø41.3	32.9
DN40	69.4x13	2.75"	38x1.5	4.8	6x6.5Ø58.7	48.1
DN40	69.4x13	2.75"	42.4x1.5	4.8	6x6.5Ø58.7	48.1
DN40	69.4x13	2.75"	44.5x2	4.8	6x6.5Ø58.7	48.1
DN50	85.7x17.3	3.38"	50.8x1.6	4.8	8x8.4Ø72.4	61.6
DN63	113.5x17.5	4.5"	70x2	8	8x8.4Ø92.1	82.4
DN100	151.6x19.8	6"	101.6x2	9.5	16x8.4Ø130.2	120.5
DN100	151.6x19.8	6"	104x2	9.5	16x8.4Ø130.2	120.5
DN100	151.6x19.8	6"	108x2	9.5	16x8.4Ø130.2	120.5
DN160	202.4x22.2	8"	152.4x2	9.5	20x8.4Ø181	171.2
DN160	202.4x22.2	8"	154x2	9.5	20x8.4Ø181	171.2
DN160	202.4x22.2	8"	159x2	9.5	20x8.4Ø181	171.2

CF-Bored Flange fixed

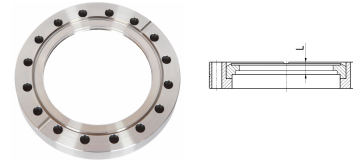
- non-tapped
- Stainless Steel



Normal Diameter	Flange OD [mm]	Flange OD [Zoll]	Tube	Actual length L	Holes	for Gasket
DN200	253.2x24.6	10"	204x2	9.5	24x8.4Ø231.8	222.1
DN200	253.2x24.6	10"	205x2.5	9.5	24x8.4Ø231.8	222.1
DN250	306x24.6	12"	254x2	9.5	32x8.4Ø284	272.9
DN250	306x24.6	12"	256x3	9.5	32x8.4Ø284	272.9
DN300	355.6x28.5	14"	306x3	12.6	30x10.5Ø325.4	313
DN350	419.1x28.5	16.5"	355.6x3	12.6	36x10.5Ø388.9	376.9
DN400	457.1x28.5	18"	406.3x3	12.6	36x10.5Ø431.8	419
DN16	33.8x7.3	1.33"	18x1	4.8	6xM4Ø27	21.3
DN25	54x12	2.13"	26.9x1.65	4.8	4xM6Ø41.3	32.9
DN40	69.4x13	2.75"	38x1.5	4.8	6xM6Ø58.7	48.1
DN40	69.4x13	2.75"	42.4x1.5	4.8	6xM6Ø58.7	48.1
DN40	69.4x13	2.75"	44.5x2	4.8	6xM6Ø58.7	48.1
DN50	85.7x17.3	3.38"	50.8x1.6	4.8	8xM8Ø72.4	61.6

CF-Bored Flange fixed

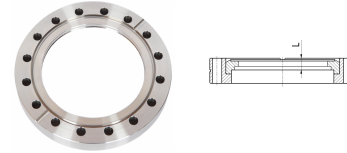
- non-tapped
- Stainless Steel



Normal Diameter	Flange OD [mm]	Flange OD [Zoll]	Tube	Actual length L	Holes	for Gasket
DN63	113.5x17.5	4.5"	70x2	8	8xM8Ø92.1	82.4
DN100	151.6x19.8	6"	101.6x2	9.5	16xM8Ø130.2	120.5
DN100	151.6x19.8	6"	104x2	9.5	16xM8Ø130.2	120.5
DN100	151.6x19.8	6"	108x2	9.5	16xM8Ø130.2	120.5
DN160	202.4x22.2	8"	152.4x2	9.5	20xM8Ø181	171.2
DN160	202.4x22.2	8"	154x2	9.5	20xM8Ø181	171.2
DN160	202.4x22.2	8"	159x2	9.5	20xM8Ø181	171.2
DN200	253.2x24.6	10"	204x2	9.5	24xM8Ø231.8	222.1
DN200	253.2x24.6	10"	205x2.5	9.5	24xM8Ø231.8	222.1
DN250	306x24.6	12"	254x2	9.5	32xM8Ø284	272.9
DN250	306x24.6	12"	256x3	9.5	32xM8Ø284	272.9
DN300	355.6x28.5	14"	306x3	12.6	30xM10Ø325.4	313
DN350	419.1x28.5	16.5"	355.6x3	12.6	36xM10Ø388.9	376.9

CF-Bored Flange rotatable

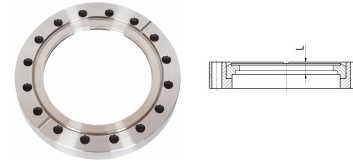
- non-tapped
- Stainless Steel



Normal Diameter	Flange OD [mm]	Flange OD [Zoll]	Tube	Actual length L	Holes	for Gasket
DN16	33.8x7.3	1.33"	18x1	4.8	6x4.3Ø27	21.3
DN25	54x12	2.13"	26.9x1.65	4.8	4x6.5Ø41.3	32.9
DN40	69.4x13	2.75"	38x1.5	4.8	6x6.5Ø58.7	48.1
DN40	69.4x13	2.75"	42.4x1.5	4.8	6x6.5Ø58.7	48.1
DN40	69.4x13	2.75"	44.5x2	4.8	6x6.5Ø58.7	48.1
DN50	85.7x17.3	3.38"	50.8x1.6	4.8	8x8.4Ø72.4	61.6
DN63	113.5x19	4.5"	70x2	9.5	8x8.4Ø92.1	82.4
DN100	151.6x21.5	6"	101.6x2	10.3	16x8.4Ø130.2	120.5
DN100	151.6x21.5	6"	104x2	10.3	16x8.4Ø130.2	120.5
DN100	151.6x21.5	6"	108x2	10.3	16x8.4Ø130.2	120.5
DN160	202.4x24	8"	152.4x2	9.5	20x8.4Ø181	171.2
DN160	202.4x24	8"	154x2	9.5	20x8.4Ø181	171.2

CF-Bored Flange rotatable

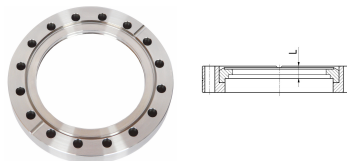
- non-tapped
- Stainless Steel



Normal Diameter	Flange OD [mm]	Flange OD [Zoll]	Tube	Actual length L	Holes	for Gasket
DN160	202.4x24	8"	159x2	9.5	20x8.4Ø181	171.2
DN200	253.2x24.6	10"	204x2	9.5	24x8.4Ø231.8	222.1
DN200	253.2x24.6	10"	205x2.5	9.5	24x8.4Ø231.8	222.1
DN250	306x24.6	12"	254x2	9.5	32x8.4Ø284	272.9
DN250	306x24.6	12"	256x3	9.5	32x8.4Ø284	272.9
DN300	355.6x28.5	14"	306x3	12.6	30x10.5Ø325.4	313
DN350	419.1x28.5	16.5"	355.6x3	12.6	36x10.5Ø388.9	376.9
DN16	33.8x7.3	1.33"	18x1	4.8	6xM4Ø27	21.3
DN25	54x12	2.13"	26.9x1.65	4.8	4xM6Ø41.3	32.9
DN40	69.4x13	2.75"	38x1.5	4.8	6xM6Ø58.7	48.1
DN40	69.4x13	2.75"	42.4x1.5	4.8	6xM6Ø58.7	48.1
DN40	69.4x13	2.75"	44.5x2	4.8	6xM6Ø58.7	48.1
DN50	85.7x17.3	3.38"	50.8x1.6	4.8	8xM8Ø72.4	61.6

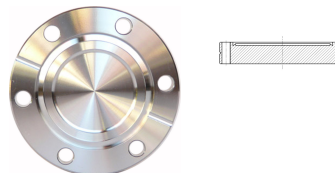
CF-Bored Flange rotatable

- tapped
- Stainless Steel



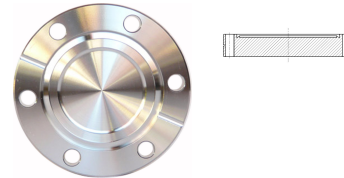
Normal Diameter	Flange OD [mm]	Flange OD [Zoll]	Tube	Actual length L	Holes	for Gasket
DN63	113.5x19	4.5"	70x2	9.5	8xM8Ø92.1	82.4
DN100	151.6x21.5	6"	101.6x2	10.3	16xM8Ø130.2	120.5
DN100	151.6x21.5	6"	104x2	10.3	16xM8Ø130.2	120.5
DN100	151.6x21.5	6"	108x2	10.3	16xM8Ø130.2	120.5
DN160	202.4x24	8"	152.4x2	9.5	20xM8Ø181	171.2
DN160	202.4x24	8"	154x2	9.5	20xM8Ø181	171.2
DN160	202.4x24	8"	159x2	9.5	20xM8Ø181	171.2
DN200	253.2x24.6	10"	204x2	9.5	24xM8Ø231.8	222.1
DN200	253.2x24.6	10"	205x2.5	9.5	24xM8Ø231.8	222.1
DN250	306x24.6	12"	254x2	9.5	32xM8Ø284	272.9
DN250	306x24.6	12"	256x3	9.5	32xM8Ø284	272.9
DN300	355.6x28.5	14"	306x3	12.6	30xM10Ø325.4	313
DN350	419.1x28.5	16.5"	355.6x3	12.6	36xM10Ø388.9	376.9

CF-Blank Flange fixed



Normal Diameter	Flange OD [mm]	Flange OD [Zoll]	Holes	for Gasket	Material
DN16	33.8x7.3	1.33"	6x4.3Ø27	21.3	Stainless Steel
DN25	54x12	2.13"	4x6.5Ø41.3	32.9	Stainless Steel
DN40	69.4x13	2.75"	6x6.5Ø58.7	48.1	Stainless Steel
DN50	85.7x17.3	3.38"	8x8.4Ø72.4	61.6	Stainless Steel
DN63	113.5x17.5	4.5"	8x8.4Ø92.1	82.4	Stainless Steel
DN100	151.6x19.8	6"	16x8.4Ø130.2	120.5	Stainless Steel
DN160	202.4x22.2	8"	20x8.4Ø181	171.2	Stainless Steel
DN200	253.2x24.6	10"	24x8.4Ø231.8	222.1	Stainless Steel
DN250	306x24.6	12"	32x8.4Ø284	272.9	Stainless Steel

CF-Blank Flange fixed



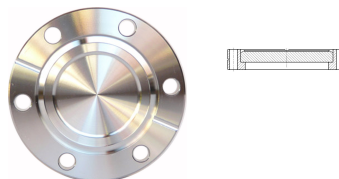
Normal Diameter	Flange OD [mm]	Flange OD [Zoll]	Holes	for Gasket	Material
DN300	355.6x28.5	14"	30x10.5Ø325.4	313	Stainless Steel
DN350	419.1x28.5	16.5"	36x10.5Ø388.9	376.9	Stainless Steel
DN400	457.1x28.5	18"	36x10.5Ø431.8	419	Stainless Steel
DN16	33.8x7.3	1.33"	6xM4Ø27	21.3	Stainless Steel
DN40	69.4x13	2.75"	6xM6Ø58.7	48.1	Stainless Steel
DN63	113.5x17.5	4.5"	8xM8Ø92.1	82.4	Stainless Steel
DN100	151.6x19.8	6"	16xM8Ø130.2	120.5	Stainless Steel
DN160	202.4x22.2	8"	20xM8Ø181	171.2	Stainless Steel
DN200	253.2x24.6	10"	24xM8Ø231.8	222.1	Stainless Steel
DN250	306x24.6	12"	32xM8Ø284	272.9	Stainless Steel

CF-Blank Flange rotatable



Normal Diameter	Flange OD [mm]	Flange OD [Zoll]	Holes	for Gasket	Material
DN16	33.8x7.3	1.33"	6x4.3Ø27	21.3	Stainless Steel
DN25	54x12	2.13"	4x6.5Ø41.3	32.9	Stainless Steel
DN40	69.4x13	2.75"	6x6.5Ø58.7	48.1	Stainless Steel
DN50	85.7x17.3	3.38"	8x8.4Ø72.4	61.6	Stainless Steel
DN63	113.5x19	4.5"	8x8.4Ø92.1	82.4	Stainless Steel
DN100	151.6x21.5	6"	16x8.4Ø130.2	120.5	Stainless Steel
DN160	202.4x24	8"	20x8.4Ø181	171.2	Stainless Steel
DN200	253.2x24.6	10"	24x8.4Ø231.8	222.1	Stainless Steel
DN250	306x24.6	12"	32x8.4Ø284	272.9	Stainless Steel

CF-Blank Flange rotatable



Normal Diameter	Flange OD [mm]	Flange OD [Zoll]	Holes	for Gasket	Material
DN300	355.6x28.5	14"	30x10.5Ø325.4	313	Stainless Steel
DN350	416.1x28.5	16.5"	36x10.5Ø388.9	376.9	Stainless Steel
DN400	457.1x28.5	18"	36x10.5Ø431.8	419	Stainless Steel
DN16	33.8x7.3	1.33"	6xM4Ø27	21.3	Stainless Steel
DN25	54x12	2.13"	4xM6Ø41.3	32.9	Stainless Steel
DN40	69.4x13	2.75"	6xM6Ø58.7	48.1	Stainless Steel
DN50	85.7x17.3	3.38"	8xM8Ø72.4	61.6	Stainless Steel
DN63	113.5x19	4.5"	8xM8Ø92.1	82.4	Stainless Steel
DN100	151.6x21.5	6"	16xM8Ø130.2	120.5	Stainless Steel
DN160	202.4x24	8"	20xM8Ø181	171.2	Stainless Steel
DN200	253.2x24.6	10"	24xM8Ø231.8	222.1	Stainless Steel

CF-Flange Tubulated fixed

- non-tapped
- Stainless Steel



Normal Diameter	Flange OD [mm]	Flange OD [Zoll]	Tube	Actual length L	Holes	Gasket
DN16	33.8x7.3	1.33"	18x1	50	6x4.3Ø27	21.3
DN25	54x12	2.13"	25.4x1.65	50	4x6.5Ø41.3	32.9
DN40	69.4x13	2.75"	38x2	50	6x6.5Ø58.7	48.1
DN40	69.4x13	2.75"	40x2	50	6x6.5Ø58.7	48.1
DN50	85.7x17.3	3.38"	50.8x1.6	100	8x8.4Ø72.4	61.6
DN63	113.5x17.5	4.5"	63.5x2	100	8x8.4Ø92.1	82.4
DN100	151.6x19.8	6"	101.6x2	100	16x8.4Ø130.2	120.5
DN100	151.6x19.8	6"	108x2	100	16x8.4Ø130.2	120.5
DN160	202.4x22.2	8"	152.4x2	100	20x8.4Ø181	171.2
DN160	202.4x22.2	8"	159x2	100	20x8.4Ø181	171.2
DN200	253.2x24.6	10"	205x2.5	100	24x8.4Ø231.8	222.1
DN250	306x24.6	12"	256x3	100	32x8.4Ø284	272.9

CF-Viewport

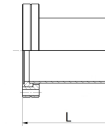
- non-tapped
- Stainless Steel 304L



Normal Diameter	Flange OD [mm]	Flange OD [Zoll]	Window diameter	Glass material	Gasket	Hole
DN16	33.8x7.3	1.33"	16.0	Kodial	21.3	6x4.3Ø27
DN40	69.4x13	2.75"	38.0	Kodial	48.1	6x6.5Ø58.7
DN63	113.5x17.5	4.5"	65.0	Kodial	82.4	8x8.4Ø92.1
DN100	151.6x19.8	6"	90.0	Kodial	120.5	16x8.4Ø130.2
DN150	202.4x22.2	8"	135.0	Kodial	171.2	20x8.4Ø181
DN200	253.2x24.6	10"		Kodial	222.1	24x8.4Ø231.8

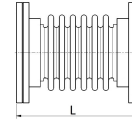
CF-Flange Tubulated rotatable

- non-tapped
- Stainless Steel



Normal Diameter	Flange OD [mm]	Flange OD [Zoll]	Tube	Actual length L	Hole	Gasket
DN16	33.8x7.3	1.33"	18x1	50	6x4.3Ø27	21.3
DN25	54x12	2.13"	25.4x1.65	50	4x6.5Ø41.3	32.9
DN40	69.4x13	2.75"	38x2	50	6x6.5Ø58.7	48.1
DN40	69.4x13	2.75"	40x2	50	6x6.5Ø58.7	48.1
DN50	85.7x17.3	3.38"	50.8x2	100	8x8.4Ø72.4	61.6
DN63	113.5x19	4.5"	63.5x2	100	8x8.4Ø92.1	82.4
DN63	113.5x19	4.5"	70x2	100	8x8.4Ø92.1	82.4
DN100	151.6x21.5	6"	101.6x2	100	16x8.4Ø130.2	120.5
DN100	151.6x21.5	6"	108x2	100	16x8.4Ø130.2	120.5
DN160	202.4x24	8"	152.4x2	100	20x8.4Ø181	171.2
DN200	253.2x24.6	10"	205x2.5	100	24x8.4Ø231.8	222.1
DN250	306x24.6	12"	256x3	100	32x8.4Ø284	272.9

CF-Formed Bellows



Normal Diameter	Flange OD [mm]	Flange OD [Zoll]	dmin Ø	Actual length L	Material
DN16	33.8x7.3	1.33"	16	110	Flange SS304 / Bellow SS316L
DN40	69.4x13	2.75"	37	160	Flange SS304 / Bellow SS316L
DN63*	113.5x17.5	4.5"	54.8	120	Flange SS304 / Bellow SS316L
DN63	113.5x17.5	4.5"	66	250	Flange SS304 / Bellow SS316L
DN100*	151.6x19.8	6"	55	120	Flange SS304 / Bellow SS316L
DN100	151.6x19.8	6"	100	250	Flange SS304 / Bellow SS316L
DN160	202.4x22.2	8"	148	155	Flange SS304 / Bellow SS316L
DN160	202.4x22.2	8"	148	270	Flange SS304 / Bellow SS316L
DN160*	202.4x22.2	8"	85	130	Flange SS304 / Bellow SS316L

CF-Hose



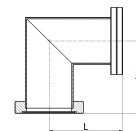
Normal Diameter	Flange OD [mm]	Flange OD [Zoll]	dmin Ø	Actual length L	Material
DN16	33.8x7.3	1.33"	15	250	Flange SS304 / Bellow SS316L
DN16	33.8x7.3	1.33"	15	500	Flange SS304 / Bellow SS316L
DN16	33.8x7.3	1.33"	15	750	Flange SS304 / Bellow SS316L
DN16	33.8x7.3	1.33"	15	1000	Flange SS304 / Bellow SS316L
DN40	69.4x13	2.75"	40	250	Flange SS304 / Bellow SS316L
DN40	69.4x13	2.75"	40	500	Flange SS304 / Bellow SS316L
DN40	69.4x13	2.75"	40	750	Flange SS304 / Bellow SS316L

CF-Hose



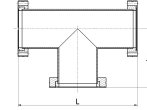
Normal Diameter	Flange OD [mm]	Flange OD [Zoll]	dmin Ø	Actual length L	Material
DN40	69.4x13	2.75"	40	1000	Flange SS304 / Bellow SS316L
DN63	113.5x17.5	4.5"	63	250	Flange SS304 / Bellow SS316L
DN63	113.5x17.5	4.5"	63	500	Flange SS304 / Bellow SS316L
DN63	113.5x17.5	4.5"	63	750	Flange SS304 / Bellow SS316L
DN63	113.5x17.5	4.5"	63	1000	Flange SS304 / Bellow SS316L
DN100	151.6x19.8	6"	100	250	Flange SS304 / Bellow SS316L
DN100	151.6x19.8	6"	100	500	Flange SS304 / Bellow SS316L
DN100	151.6x19.8	6"	100	750	Flange SS304 / Bellow SS316L
DN100	151.6x19.8	6"	100	1000	Flange SS304 / Bellow SS316L

CF-Elbow Rectangular 90°



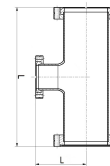
Normal Diameter	Flange OD [mm]	Flange OD [Zoll]	dmin Ø	Actual lenght L	Material
DN16	33.8x7.3	1.33"	16	40	Stainless Steel
DN40	69.4x13	2.75"	37	70	Stainless Steel
DN63	113.5x17.5	4.5"	66	100	Stainless Steel
DN100	151.6x19.8	6"	100	130	Stainless Steel
DN160	202.4x22.2	8"	150	160	Stainless Steel
DN200	253.2x24.6	10"	200	200	Stainless Steel

CF-Tee



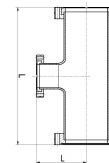
Normal Diameter	Flange OD [mm]	Flange OD [Zoll]	dmin Ø	Actual length L	Hole	Material
DN16	33.8x7.3	1.33"	16	76/38	6x4.3Ø27	Stainless Steel
DN40	69.4x13	2.75"	37	126/63	6x6.5Ø58.7	Stainless Steel
DN63	113.5x17.5	4.5"	66	210/105	8x8.4Ø92.1	Stainless Steel
DN100	151.6x19.8	6"	100	270/135	16x8.4Ø130.2	Stainless Steel
DN160	202.4x22.2	8"	150	334/167	20x8.4Ø181	Stainless Steel
DN200	253.2x24.6	10"	200	406/203	24x8.4Ø231.8	Stainless Steel
DN16	33.8x7.3	1.33"	16	76/38	6x4.3Ø27	Stainless Steel
DN40	69.4x13	2.75"	37	126/63	6x6.5Ø58.7	Stainless Steel
DN63	113.5x17.5	4.5"	66	210/105	8x8.4Ø92.1	Stainless Steel
DN100	151.6x19.8	6"	100	270/135	16x8.4Ø130.2	Stainless Steel
DN160	202.4x22.2	8"	150	334/167	20x8.4Ø181	Stainless Steel
DN200	253.2x24.6	10"	200	406/203	24x8.4Ø231.8	Stainless Steel

CF-Reducing Tee



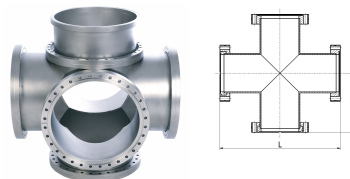
Normal Diameter	Flange OD [Zoll]	dmin Ø	Actual length L	Gasket	Material
DN40/DN16	2.75"/1.33"	37/16	76/38	48.1/21.3	Stainless Steel
DN63/DN40	4.5"/2.75"	66/37	210/77	82.4/48.1	Stainless Steel
DN100/DN40	6"/2.75"	100/37	270/95	120.5/48.1	Stainless Steel
DN100/DN63	6"/4.5"	100/66	270/95	120.5/82.4	Stainless Steel
DN160/DN40	8"/2.75"	150/37	134/120	171.2/48.1	Stainless Steel
DN160/DN63	8"/4.5"	150/66	134/120	171.2/82.4	Stainless Steel
DN160/DN100	8"/6"	150/100	134/120	171.2/120.5	Stainless Steel
DN200/DN40	10"/2.75"	200/37	406/145	222.1/48.1	Stainless Steel

CF-Reducing Tee



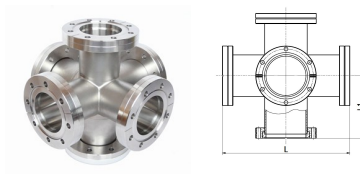
Normal Diameter	Flange OD [Zoll]	dmin Ø	Actual length L	Gasket	Material
DN200/DN63	10"/4.5"	200/66	406/145	222.1/82.4	Stainless Steel
DN200/DN100	10"/6"	200/100	406/145	222.1/120.5	Stainless Steel
DN200/DN160	10"/8"	200/150	406/145	222.1/171.2	Stainless Steel
DN250/DN40	12"/2.75"	250/37	500/170	272.9/48.1	Stainless Steel
DN250/DN63	12"/4.5"	250/66	500/170	272.9/82.4	Stainless Steel
DN250/DN100	12"/6"	250/100	500/170	272.9/120.5	Stainless Steel
DN250/DN160	12"/8"	250/150	500/170	272.9/171.2	Stainless Steel
DN250/DN200	12"/10"	250/200	500/170	272.9/222.1	Stainless Steel

CF-Cross



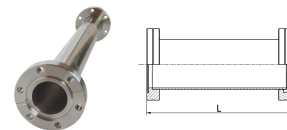
Normal Diameter	Flange OD [mm]	Flange OD [Zoll]	dmin Ø	Actual length L	Gasket	Material
C4-DN16	33.8x7.3	1.33"	16	76	21.3	Stainless Steel
C4-DN40	69.4x13	2.75"	37	126	48.1	Stainless Steel
C4-DN63	113.5x17.5	4.5"	66	210	82.4	Stainless Steel
C4-DN100	151.6x19.8	6"	100	270	120.5	Stainless Steel
C4-DN160	202.4x22.2	8"	150	334	171.2	Stainless Steel
C4-DN200	253.2x24.6	10"	200	406	222.1	Stainless Steel
C5-DN16	33.8x7.3	1.33"	16	76	21.3	Stainless Steel
C5-DN40	69.4x13	2.75"	37	126	48.1	Stainless Steel
C5-DN63	113.5x17.5	4.5"	66	210	82.4	Stainless Steel

CF-Cross



Normal Diameter	Flange OD [mm]	Flange OD [Zoll]	dmin Ø	Length L	Gasket	Material
C5-DN100	151.6x19.8	6"	100	270	120.5	Stainless Steel
C5-DN160	202.4x22.2	8"	150	334	171.2	Stainless Steel
C5-DN200	253.2x24.6	10"	200	406	222.1	Stainless Steel
C6-DN16	33.8x7.3	1.33"	16	76	21.3	Stainless Steel
C6-DN40	69.4x13	2.75"	37	126	48.1	Stainless Steel
C6-DN63	113.5x17.5	4.5"	66	210	82.4	Stainless Steel
C6-DN100	151.6x19.8	6"	100	270	120.5	Stainless Steel
C6-DN160	202.4x22.2	8"	150	334	171.2	Stainless Steel
C6-DN200	253.2x24.6	10"	200	406	222.1	Stainless Steel

CF-Straight Connector



Normal Diameter	Flange OD [mm]	Flange OD [Zoll]	Tube	Actual length L	Hole	Gasket
DN16	33.8x7.3	1.33"	18	40-500	6x4.3Ø27	21.3
DN40	69.4x13	2.75"	40	50-500	4x6.5Ø41.3	48.1
DN63	113.5x17.5	4.5"	70	60-500	8x8.4Ø92.1	82.4
DN100	151.6x19.8	6"	108	75-500	16x8.4Ø130.2	120.5
DN160	202.4x22.2	8"	154	80-400	20x8.4Ø181	171.2
DN200	253.2x24.6	10"	204	85-350	24x8.4Ø231.8	222.1

CF-Copper-Gasket



Normal Diameter	Flange OD [mm]	Flange OD [Zoll]	IDØ	Length L	Material
DN16	21. Mrz	1.33"	16.2	2	Copper
DN25	32.9	2.13"	25.6	2	Copper
DN40	48.1	2.75"	36.8	2	Copper
DN50	61.6	2.38"	50.9	2	Copper
DN63	82.4	4.5"	63.6	2	Copper
DN100	120.5	6"	101.7	2	Copper
DN160	171.2	8"	152.5	2	Copper
DN200	222.1	10"	203.3	2	Copper
DN250	272.9	12"	254	2	Copper
DN300	313	14"	300	2	Copper
DN350	376.9	16.5"	356.3	2	Copper
DN400	419	18"	407	2	Copper